

## Main facts at a glance

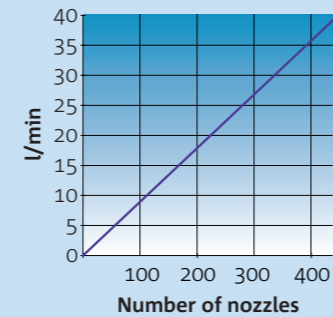


**NEW!**  
Modular  
construction

### Type of pump and Art.

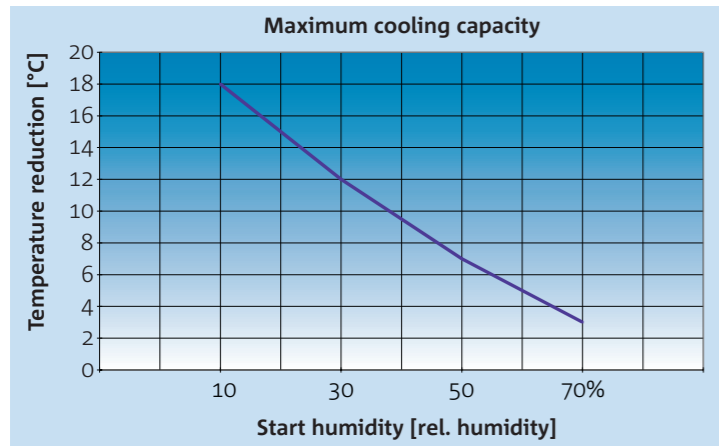
Volume*	Pump unit	Pressure relief modul	Modules for two house systems	
			without pressure relief	with pressure relief
6 l/min	7211	7113	7114	7115
12 l/min	7212			
21 l/min	7213			
30 l/min	7214			
38 l/min	7215			

Maximum number of nozzles



Flow rate per nozzle at 70 bar: 5,3 l/hour

\*Standard voltage 400 V 50 Hz. Special voltages on request!



Maximum Cooling capacity

Start temperature	36°C	36°C	36°C	36°C
Start humidity	10%	30%	50%	70%
End temperature	18°C	24°C	29°C	33°C
End humidity	85%	85%	85%	85%
Cooling capacity	18°C	12°C	7°C	3°C

We shall be pleased to work out an offer for your individual needs. Very important: The layout of the LUBING Top-Climate-System depends on the house dimensions, the ventilation system and the animal species. If in-

terested, please fill in the layout sheet (also in the internet: [www.lubing.com](http://www.lubing.com)) completely and send it to us.

The delivery program of the LUBING Top-Climate-System covers, besides the various small articles such as the installation accessories, the switch boxes and controller.

**For further information: [www.lubing.com](http://www.lubing.com)**

Technical modifications reserved.

## Top-Climate-System

Cooling, Humidifying, Dust binding  
with 70 bar (1000 psi) water pressure



# LUBING



**Drinking-Systems  
Conveyor-Systems  
Climate-Systems**

LUBING Maschinenfabrik GmbH & Co. KG

Lubingstraße 6 · 49406 Barnstorf (Germany)  
Tel.: +49 (0) 54 42 - 98 79-0 · Fax: +49 (0) 54 42 - 98 79-33  
[www.lubing.com](http://www.lubing.com) · [info@lubing.com](mailto:info@lubing.com)

0840-1 / 03-19 / 250

with  
**high pressure nozzles**  
**Art. 7340**

## LUBING Top-Climate-System for poultry



### The Principle

The LUBING Top-Climate-System was developed for effective humidifying, cooling and dust binding of the house air. It works according to the principle of the direct evaporative cooling.

### Cooling

Through high pressure nozzles water is injected into the house air with a pressure of 70 bar as fog.

The fog evaporates immediately and causes the cooling of the house air by extracting heat. This cooling effect saves energy because the ventilation rate can be throttled.

### Humidifying

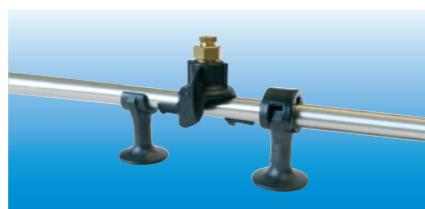
During heating periods and after the arrival of young animals the LUBING Top-Climate-System is used for the rise of the humidity to optimum value.

The world-wide approved LUBING Top-Climate-System operates successfully with any kind of ventilation system. Even in open houses with only low compulsory ventilation, a considerable improvement of the house climate is achieved.

The LUBING Top-Climate-System contributes substantially to the animals' health and activities with laying hens as well as fattening poultry and rearing. So the medicine application may be reduced.

### FlexClamp-System

FlexClamp-System with brass nozzle and tube clip.



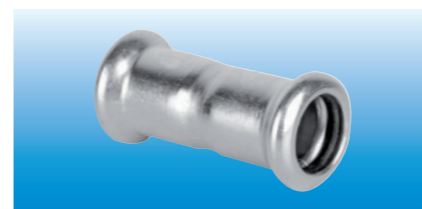
### Cutting ring coupling

Cutting ring coupling made of stainless steel for secure connection of the nozzle lines.



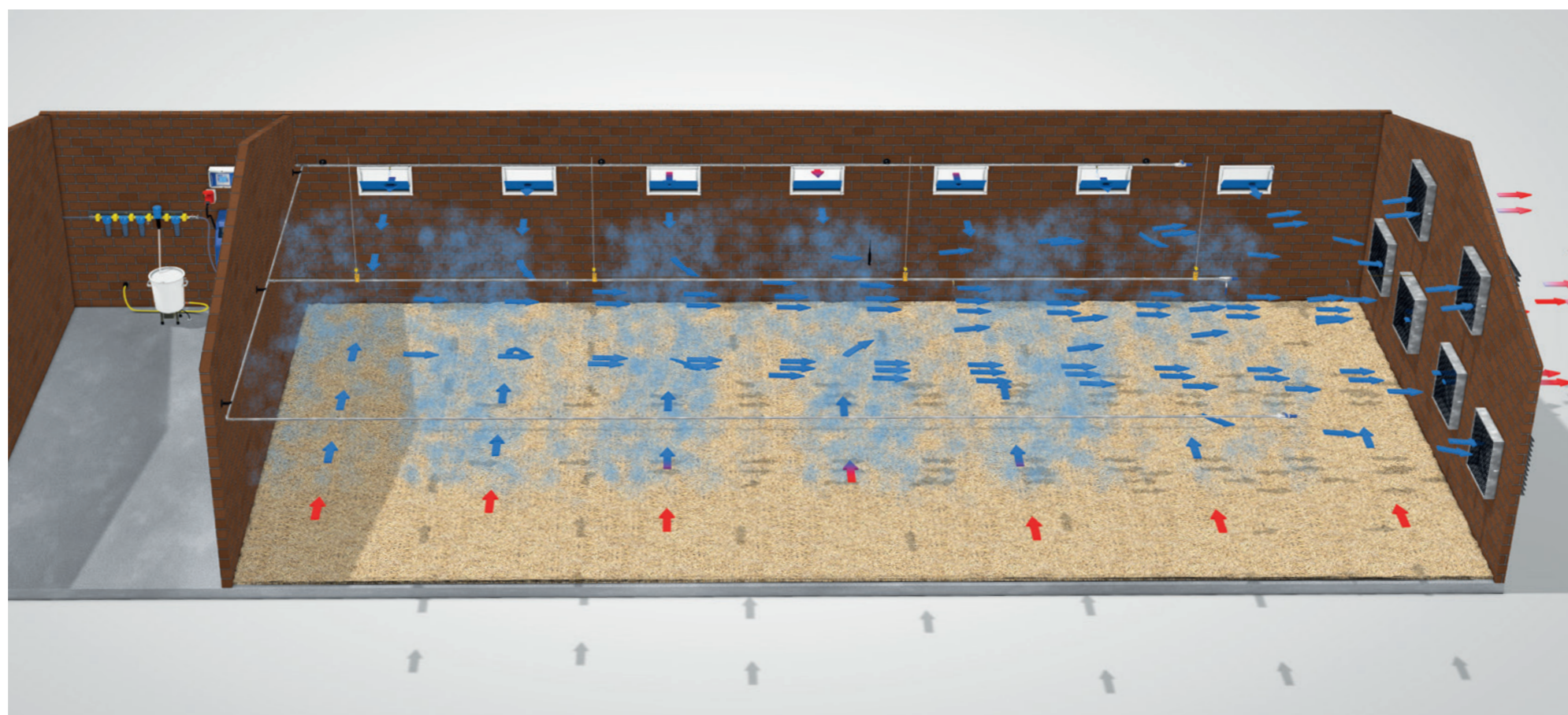
### Press Fix

Press Fix is a joint unit made of stainless steel. Just set in and press to fit. A simple and safe connection.



### Stainless tube

Stainless steel tube with welded adapter, brass nozzle and plastic tube clip.



### Central filter unit

Central filter unit with medicator.



### Pump unit – D-Line

Pump unit with direct drive.



### Touch Controller

The interactive controller for the control and monitoring of the pump unit.



### Nozzle line

Nozzle line with brass nozzle. Art. 7340.

### The advantages at a glance:

- Fast cooling in the house without any wetness.
- Increase of the humidity to every value desired (greatest wellbeing between 60 – 70% relative humidity).
- Effective dust binding influences positively the breath organs of the animals.
- More active animals by proper climate, regular spread of temperature.
- Better feed conversion.
- Optimum performance.
- Less aggression, natural animal behaviour.
- Use of the system for soaking and disinfection.
- LUBING medicator to spray in medicated drinking water (for prevention and therapy of respiratory diseases).
- Possibility of automatic operation in different houses by connection to the LUBING controller or other climate computers with one system.
- Constant laying results also in summer.
- Operation of several houses with one pump unit.