



WEDA®

www.weda.de

Liquid feeding





Non-residue feeding BW+



Efficient feeding with liquid feeding systems

WEDA is the world market leader in the liquid feeding segment. Our highly profitable computer-controlled liquid feeding systems guarantee optimum efficiency and profit in pig production

WEDA liquid feeding systems are tailored to your individual needs and are therefore 'completely unique'. Our systems also feature a high level of safety and maximum feeding accuracy, along with maximum hygiene. This means you can minimise your workload and reduce costs at the same time.

By using liquid feeding systems, we enable extremely precise feed supply along the feed curve. The feed is mixed and dosed precisely to ensure that each animal gets the right recipe and right quantity at all times. Especially in hot climates, liquid feed leads to an increase in feed intake of at least 15-20%.

In addition, the water supply is integrated into the daily drinking programme. Our liquid feeding systems allow you to use a wide range of feeds for your pigs without the restrictions of conventional dry feeding. Both liquid and dry by-products can be easily integrated into the feed.

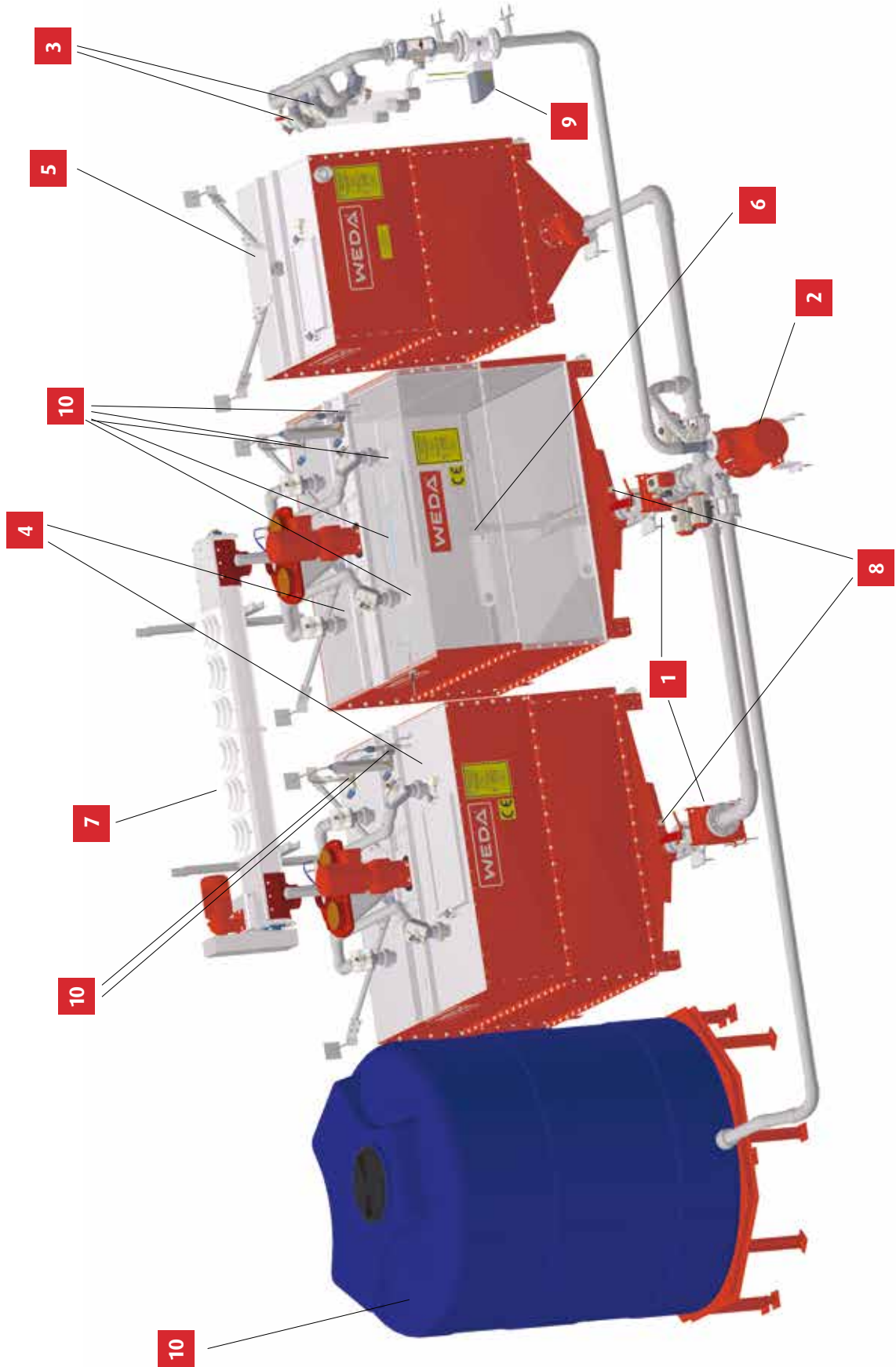
- **Needs-based feeding according to feed curve**
- **Lowest work costs and highest accuracy**
- **Cleaning at the highest level**
- **Modular design**
- **Individual system size**
- **Fully automatic system**



4,000 piglet places



40,000 finishing places



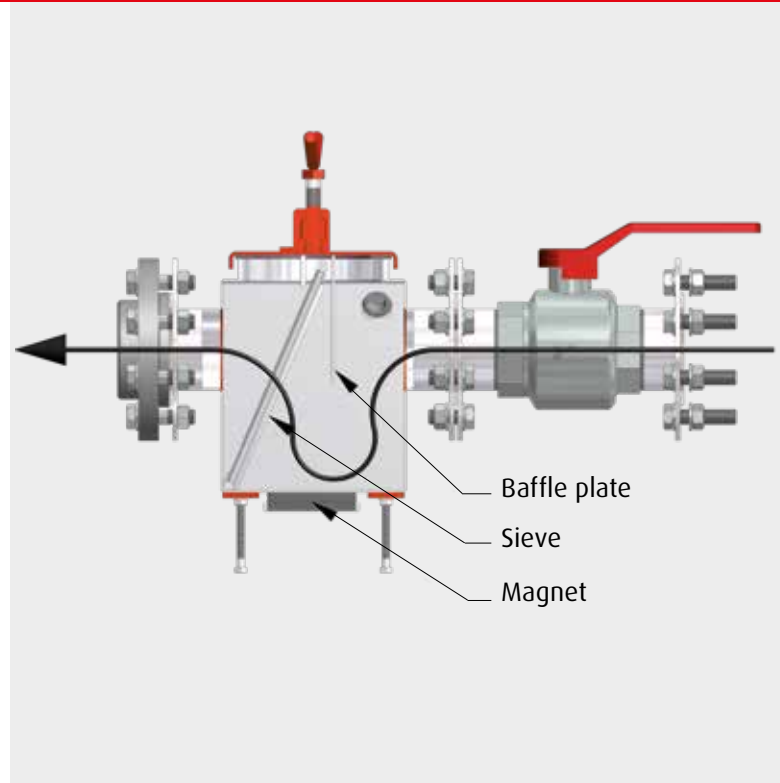
- 1 Stone trap:** to protect the system from foreign bodies by means of strong magnets and an integrated sieve.
- 2 Pump:** WEDA has both centrifugal pumps and screw pumps in its range. Each pump is tested before delivery to the customer. A further benefit: the spare parts for our pumps are inexpensive
- 3 Feed valves:** our valves have a large through cross-section and a durable special diaphragm.
- 4 Mixing tank with feed hopper:** the feed components are fed into the mixing tank via the feed hopper and mixed there. Due to the special design of the feed hopper, no soiling occurs at the meal inflow.
- 5 Service water tank:** for storing the process water, which is used to transport the feed soup through the pipes to the troughs. The process water acts as a pushing medium. It pushes the feed soup through the pipes to the appropriate feed valves.

- 6 Component agitator made of stainless steel:** ensures optimum mixing of the feed components for a homogeneous liquid feed. Our agitators are also available as high-speed cutting agitators.
- 7 Right-left trough auger:** reliably doses the individual feed components into the feed hopper. Available in stainless steel or galvanised versions.
- 8 pH-Control:** enables the feeding of a feed mixture with a pH value specified by the customer. An ideal pH value reduces intestinal problems in animals and improves their vitality
- 9 FRM (electromagnetic flow rate measuring):** the flow rate of the outgoing feed or water is measured after the pump. The measurement increases the dosing accuracy.
- 10 WEDA hygiene package with Hy.Light, acid/lye cleaning, tank cleaning and fresh water tank:** ensures hygiene and cleanliness in the tanks and pipework





Stone trap



Safety for your pumps

We utilise the proven stone trap mechanism to optimally protect the pumps in your liquid feeding system. This intelligent mechanism uses powerful magnets to effectively separate metallic foreign bodies, thus ensuring that the pumps function perfectly. Potentially harmful metal particles are reliably removed from the pumping process.

In addition, our system has an integrated sieve providing an additional layer of safety. This sieve is designed to reliably filter out non-metallic impurities and foreign bodies to ensure smooth, trouble-free feeding. This not only helps protect the pumps, but also ensures the quality and purity of your feed flow.

- Separation of metallic objects
- Integral sieve removes non-metallic foreign bodies



Screw pump



Centrifugal pump



Centrifugal pump, rear view

Reliable transport

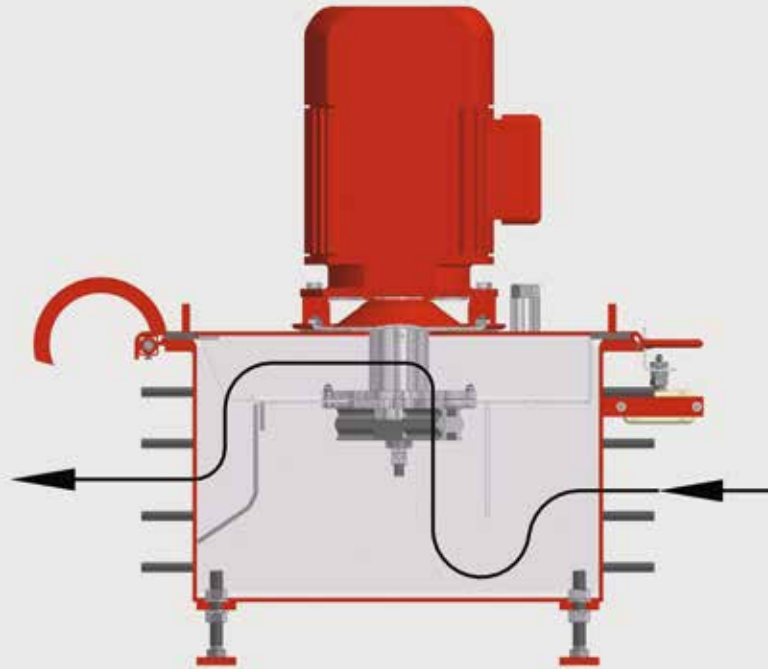
- **Centrifugal and screw pumps**
- **Reliable and problem-free transport**
- **Screw pumps for extreme areas**

Our pumps are extremely reliable and ensure problem-free transport in your liquid feeding system. They are produced at our headquarters in Lutten, Germany and extensively tested before leaving the factory

The screw pump has been specially developed for use in demanding environments, particularly in situations where viscous media need to be pumped. This pump design has proven to be particularly good for large systems, and enables the purchasing of spare parts at extremely favourable prices.



Macerator



For consistent feed consistency

The macerator is used to grind pumpable media such as French fries and potatoes. Heavy foreign matter (e.g. stones) are held back.

The macerator can be precisely controlled by integrating a frequency inverter for variable speeds. All components coming into contact with the feed are made of high-quality stainless steel. This guarantees highest hygiene and quality standards in the processing of animal feed.

- Parts in contact with feed are made of stainless steel
- Heavy foreign matter is held back



Proven a million times over

- **Low wear**
- **PVC valve body**

The feed valves have a large through cross-section and a durable special diaphragm.

Wear during operation is significantly minimised thanks to the large valve opening. We also offer the valve body made of PVC for even greater wear resistance. This extended valve opening also enables increased flow rates.



Tank



Type QXS

Volume:
650 to 1650 litres



Type QS

Volume:
500 to 2000 litres



Type QM

Volume:
1500 to 5500 litres



Type Q

Volume:
4000 to 25,000 litres



Type GR

Volume:
4400 to 6200 litres

The right tank for every system

From the Conticomp tank to the GR type: We have the right tank for any system. We can also guarantee highest quality levels because all our stainless steel tanks are manufactured at our company headquarters in Lutten, Germany

Good mixing is possible due to the optimised tank shape. The tanks are made of high-quality stainless steel and have a clean screw connection. As most of the tanks are bolted constructions, the transport volume is significantly smaller.

Dust Control helps to drastically reduce the formation of dust in your feed kitchen. This leads to dust generation reductions of up to 95%.

- **Stainless steel and GRP tank**
- **Dust Control: up to 95% less dust**
- **Clean screw connection**
- **Optimised tank shape**



Optimum health status

- **pH-adapted feeding**
- **Better feed intake improves vitality**
- **Reduction of intestinal problems**

Optimum health status and minimum animal losses. With pH-Control, the pH value of the mixed liquid feed is measured and set to a pre-specified level. This results in optimal digestive flora in the gastrointestinal tract of the animals, as a constant pH value has a positive effect on the quantity and activity of the digestive enzymes.

pH control plays a decisive role in piglet and sow husbandry. The pH value measurement and regulation is automated using a measuring control chain. An optimum pH value significantly contributes to increasing the health and vitality of your animals. We have patented this process.



Electromagnetic flow rate measuring



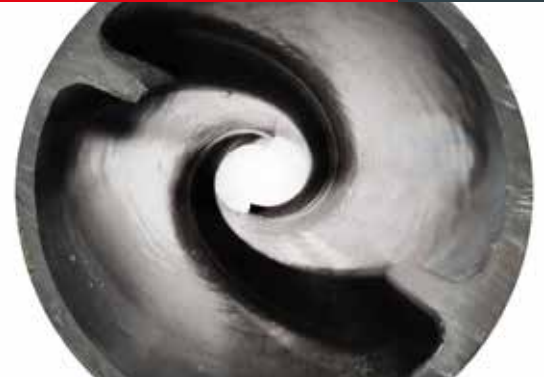
Dosing accuracy due to electromagnetic FRM

The use of electromagnetic flow rate measuring (FRM) means that the feed or water flowing out is measured independently of the scale value, which helps to prevent excessive fresh water production. This innovative technology enables precise recording of the flow rate, which then has a positive effect on dosing accuracy.

FRM technology is a reliable method of continuously monitoring and controlling the flow of liquids in animal feeding systems. It ensures that the amount of feed or water dispensed is always precisely recorded. This not only enables more efficient use of resources, but avoids unnecessary waste.

Implementing electromagnetic flow rate measuring in your feeding system helps to increase the profitability and efficiency of your feeding processes. At the same time, it ensures an optimum supply for your animals and minimises the risk of overproduction of fresh water, which ultimately contributes to more efficient feeding.

- **Highest accuracy**
- **No additional process water**



without MixPipe

Prevention of transport sedimentation

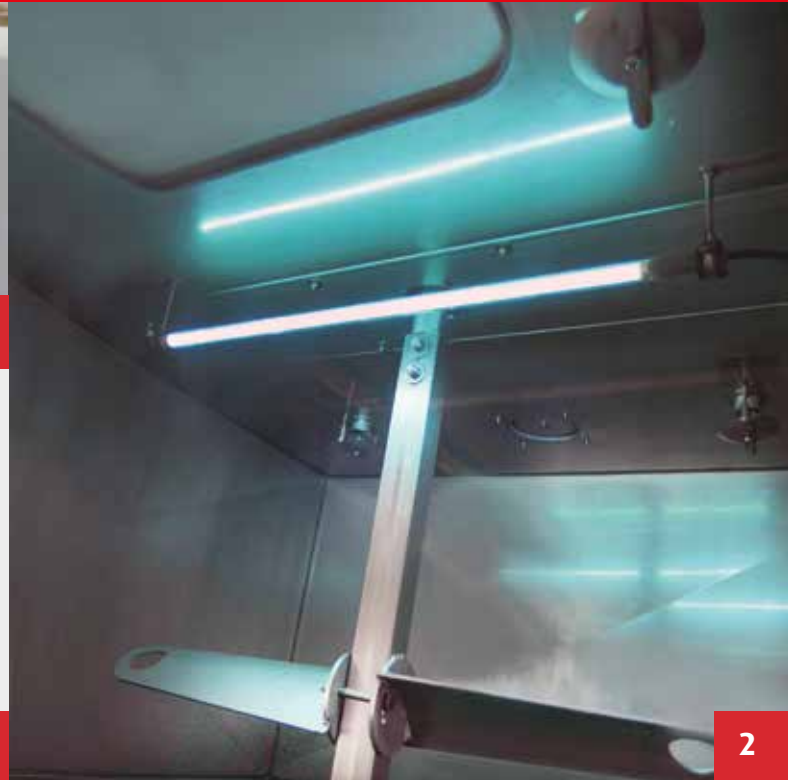
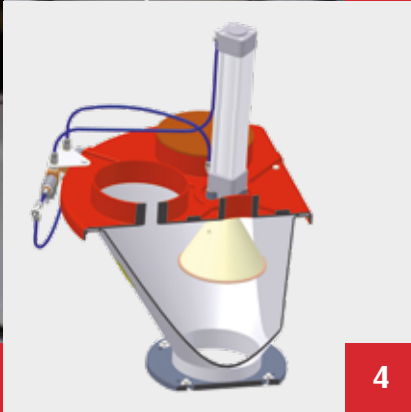
- **Prevention of transport sedimentation**
- **Feed mix is constantly remixed**

The MixPipe, one of our own developments, is an effective solution for preventing the separation of water and feed. Its functional principle ensures continuous mixing of the feed mixture as it flows through the pipeline.

The pipeline has a special spiral structure. This structure consists of a lip about 10 mm high and ensures constant movement and mixing of the liquid feed mixture.



Hygiene pack



Features

1 WACS (WEDA Active Cleaning System)

- Fully automatic down pipe cleaning
- Suitable for almost all system types
- Reduction of manual cleaning work
- Easy integration into existing systems

2 Hy.Light

- Proven UV irradiation
- Based 100% on UV light
- Kills bacteria and germs on the walls of the tanks
- Prevents the development of fungi and yeasts
- Hy.Light can be easily switched off
- No risk to people, e.g. from acid nebulisation or ozone
- No risk of system corrosion

3 Tank cleaning system / sprinkler

- Pump-operated
- Cleaning of the lid and walls of the tank with water or cleaning fluid
- Optimum cleaning effect due to high water pressure and large volume of water

4 Feed hopper

- Conical plug prevents water from being drawn up to the dry components (no mould formation)
- Smooth closure in the tank
- The formation of germs at screw inlets is avoided



5



6



7

5 Ball valves

- Installed directly on the centrifugal pump or stator of the screw pump
- No dead corners in the pipe system
- Made completely of stainless steel
- Easy servicing, since it is screwed and not glued

6 Diaphragm pump

- Specially designed for chemicals
- Automatic weekly cleaning of the feeding system
- For pH value regulation and alkaline system cleaning

7 Cleaning with acid / lye

- Automatic cleaning with lye to kill acid-tolerant organisms (e.g. yeasts)
- Hazard-free cleaning of the pipes with acid



www.weda.de

Art.-Nr.: 910740

09_24.EN

All information subject to change.
Changes are possible at any time.



WEDA
Dammann & Westerkamp GmbH
Am Bahnhof 10 · 49424 Lutten
Germany

Phone: +49 4441.8705.0

Fax: +49 4441.5500

Email: info@weda.de

Internet: www.weda.de